

IT'S TIME TO COMPLEMENT AND
GET MORE OUT OF CONVENTIONAL
INTERVENTIONS.

THE PATHFINDER ENDEAVOUR:

PAVING THE WAY FOR SUSTAINABLE DEVELOPMENT WITH MALARIA AS TRACER

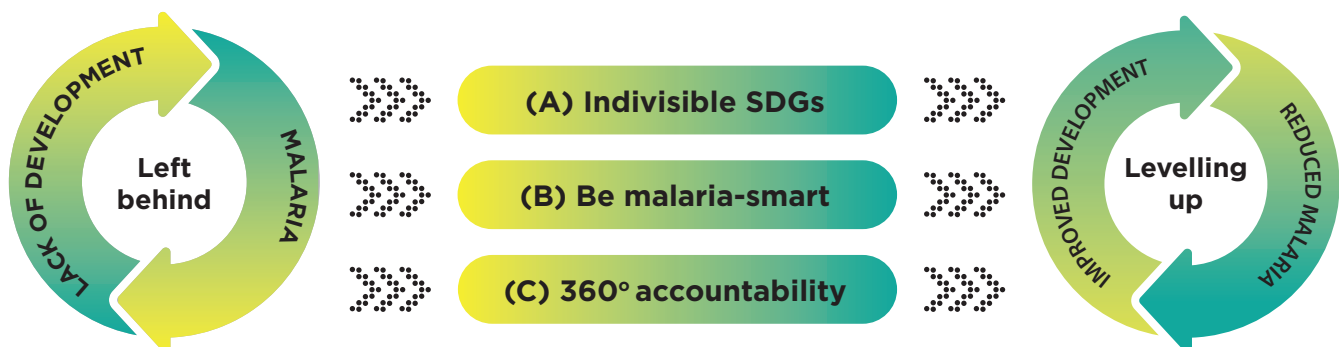
Health technologies have helped to reduce the number of malaria deaths greatly. However, development and malaria are intrinsically interconnected. History and contemporary experience show that sustainable results are **not possible without concurrent improvements** to both.

95% of all malaria cases occur in **Africa** and challenges mount as **climate change** affects the environment and redirects resources. Countries with intensive malaria lose 1.3% **economic growth** every year. GDP per capita in countries not affected by malaria grows **five times faster** than in countries affected by a heavy malaria burden.

Countries and within countries, areas and populations are trapped in a **vicious cycle** that leaves them **the furthest behind** socially and economically.

FROM VICIOUS TO VIRTUOUS

Comprehensive multisectoral action through **three concurrent pathways** in uncharted territory: (A) indivisible SDGs; (B) be malaria-smart; and (C) 360° accountability.



Note! The three pathways also apply to **neglected tropical diseases** and some **enteric diseases**.

A REAL-LIFE 'TRY, LEARN AND SHARE' ENDEAVOUR

District focus to **unlock synergies** and **release co-benefits** across all sectors and actors. Together, **complement** and get more out of **existing structures and resources** for sustainable results. Champion teams spearhead four phases to: **tool-up – integrate – evaluate**. Three years with guidance, physical and virtual workshops, peer review and cross-learning, technical assistance, and catalytic funding.

Development partners	Country champions
Onboard: UNDP, UNHabitat, WHO (GMP, NTD, SDH), and RBM-Partnership to End Malaria In discussion: Other development, evaluation, data, communications, and funding partners	National Pathfinder Champion Team MoLG, MoH, a lead dev. partner District Pathfinder Champion Teams (3 per country) Local government, health, locally present dev. partner

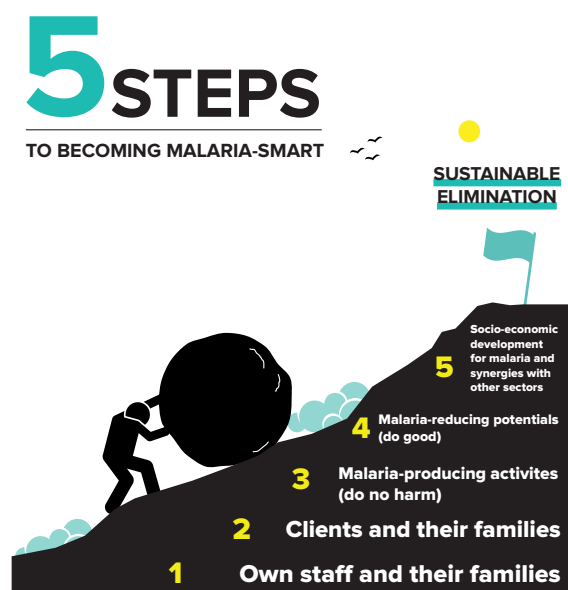
A: INDIVISIBLE SDGs IN 5 GROUPS

In addition to the relevant global malaria, NTD and enteric disease indicators.

- The district chooses, monitors, and acts on at least two **malaria-critical indicators** for each of the five SDG groups.
- Guidance to **collect and analyze disaggregated** SDG-indicator data within district.
- Guidance to effectively **improve and level-up** SDGs, areas and populations left behind.
- Guidance and tools for **local councils and assemblies** to use disaggregated data for policymaking, planning, and action.
- Guidance to **articulate needs** and **call for support**.



B: BE MALARIA-SMART IN 5-STEPS



- **Step 1** – Engage public and private **employers** in demand-side actions to reduce barriers in effective coverage of conventional disease interventions for own staff and their families.
- **Step 2** – Engage public and private **providers of goods and services** to do the same for clients, customers, and their families.
- **Step 3** – Guidance to map, analyze, and act on malaria-producing areas and activities (**do-no-harm**)
- **Step 4** – Guidance to map, analyze, and encourage processes and activities with malaria-reducing potentials (**do-good**)
- **Step 5** – Guidance to map, analyze and address **root-causes of inequities** within the district.

C: 360° ACCOUNTABILITY

- 1. Political:** local councils to act, monitor, and hold district and national players accountable.
- 2. Technical:** analyze and act on GTS, NTD, enteric disease and SDG indicators.
- 3. Public:** direct and real-time engagement of citizens, including through digital platforms.



The Pathfinder Secretariat: <https://undp-capacitydevelopmentforhealth.org/the-comprehensive-multisectoral-action-framework-for-malaria-and-sustainable-development/>

Mail: Erik Blas (erik.blas@undp.org)